

# ADCRAFT®



## **INSTRUCTION MANUAL**

### VS-300

## **VACUUM PACKAGING MACHINE**

This manual contains important information regarding your Adcraft unit. Please read this manual thoroughly prior to equipment set-up, operation and maintenance. Failure to comply with regular maintenance guidelines outlined in this manual may void the warranty.

## WARNINGS

- Do not touch any hot surfaces
- Plug only into a 3-hole grounded electrical outlet of the appropriate voltage
- Do not immerse unit, cord or plug in liquid at any time
- Unplug cord from outlet when not in use and before cleaning
- Do not operate unattended
- Do not use this unit for anything other than intended use
- Do not use outdoors
- Always use on a firm, dry and level surface away from any heat sources
- Do not use if unit has a damaged cord or plug, in the event the appliance malfunctions, or has been damaged in any manner
- Keep children and animals away from unit
- Any incorrect installation, alterations, adjustments and/or improper maintenance can lead to property loss and injury. All repairs should be done by authorized professionals only.

## IMPORTANT TIPS

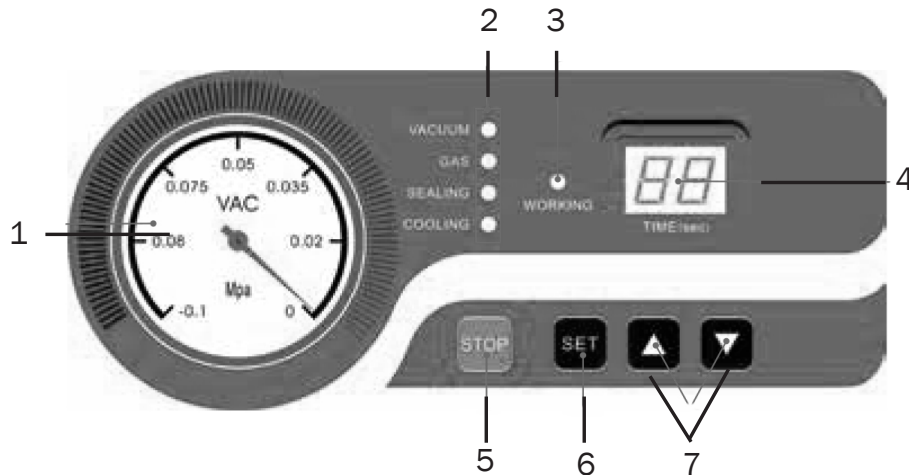
- Vacuum packaging is not a substitute for canning. All perishables still need to be refrigerated or frozen
- Follow all food safety regulations as outlined by the FDA at [www.FDA.gov](http://www.FDA.gov)
- Some fruits and vegetables may release gases which is known as outgassing. When packaging these fruits and vegetables, outgassing can cause the vacuum to be gradually lost over time. Blanching or freezing before vacuum packaging helps prevent this from occurring.
- Delicate foods can be frozen prior to packaging to protect them from getting crushed by the vacuum,
- Allow foods and liquids to cool before vacuum packaging
- Avoid overfilling the pouch by leaving a minimum of 3" of space between the contents and the open end of the pouch. This will prevent spills during the vacuum sealing process.
- To prevent wrinkles from forming in the seal, gently stretch the pouch flat along the seal bar before closing the lid

## FEATURES

1. Seal Pad
2. Lid Gasket
3. Power Switch
4. Vacuum Chamber
5. Filler Plates
6. Seal Bar
7. Lid Lock
8. Control Panel



## Control Panel



1. **Vacuum Gauge** - Indicates the vacuum level inside the chamber.

### Function Lights:

*Vacuum* - Illuminates to adjust vacuum time as well as during the vacuum process. During set up, adjust the vacuum time using the UP/DOWN buttons.

*Sealing* - Illuminates to adjust vacuum time as well as during the sealing process. During set up, adjust the sealing time using the UP/DOWN buttons.

*Cooling* - Illuminates to adjust vacuum time as well as during the cooling process. During set up, adjust the cooling using the UP/DOWN buttons.

2. **Working Indicator Light** - Illuminates to indicate the machine is in use.

3. **LED Screen (Time)** - Displays current function to cycle time, measured in seconds.

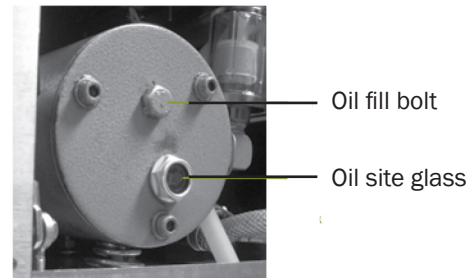
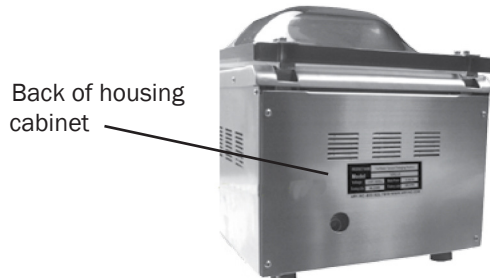
4. **STOP Button** - Press to stop the cycle and immediately seal the pouch. This button will only work when the machine is in the vacuum process.

5. **SET Button** - Press to select the vacuum time, sealing time or cooling time. Use with the UP/DOWN buttons.

6. **UP/DOWN Buttons** - Press to increase or decrease vacuum time, sealing time or cooling time.

## Adding Oil to the Vacuum Machine

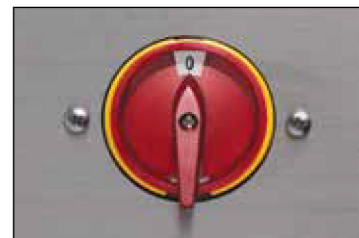
**NOTE: OIL MUST BE ADDED TO THE MACHINE PRIOR TO USE. MAKE SURE THE UNIT IS TURNED OFF AND UNPLUGGED BEFORE ADDING OIL.**



- 1. Prepare the oil** - Fill the empty oil bottle with the oil that comes with the machine.
- 2. Remove the back panel** - Using a Phillips head screwdriver, remove the four screws from the back panel and take the panel off the machine.
- 3. Remove the oil fill bolt** - Locate the oil fill bolt on the vacuum pump and remove it using an adjustable wrench or similar tool.
- 4. Fill the pump with oil** - Insert the spout into the open hole and begin pouring the oil into the pump. Fill the pump until the oil level is at  $1/2$  to  $3/4$  in the site glass. This is approximately 3 - 3 1/2 ounces of oil.
- 5. Replace the oil fill bolt and back panel** - Once the pump is filled with oil, screw the oil fill bolt back in place and put the back of the panel on the machine.

## Starting Up the Vacuum Machine

- 1. Attach the power cord and plug the machine in.**
- 2. Open the lid**
- 3. Turn the power switch on** - red power switch is located on the left side of the unit. Once turned on an indicator symbol with show on the control panel.



## Adjusting the Timing Controls

**NOTE:**All timing adjustments must be made with the lid lock off and the lid open.

To adjust or set the timing controls, press the **SET** button on the control panel until the required label (Vacuum, Sealing or Cooling) is illuminated. For each selection, the current time setting will show on the LED screen. All time settings are displayed in seconds.

For initial testing, the time settings should be:

Vacuum time - 40 seconds

Sealing time - 1.2 seconds

Cooling time - 2 seconds

**Vacuum Time:** To increase or decrease the vacuum time, press the **SET** button until **VACCUM** is illuminated and then use the **UP/DOWN** buttons to adjust the vacuum time accordingly. The time setting will display on the LED screen on the control panel.

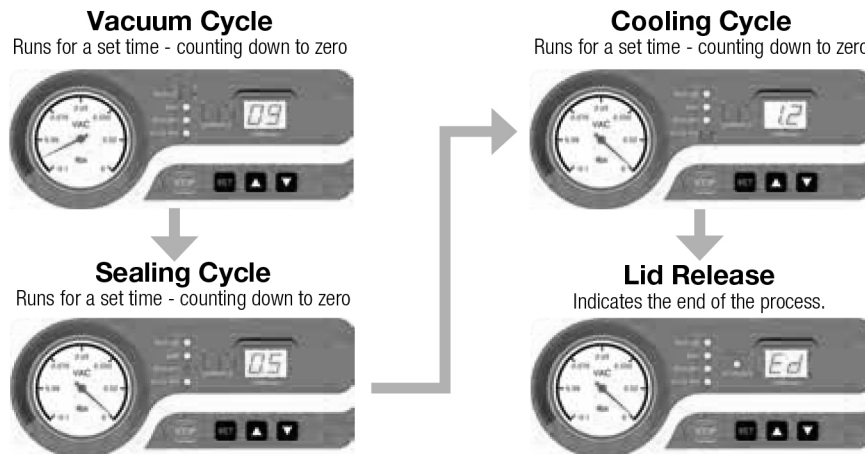
**NOTE:** filler plates can be used to reduce the vacuum time required. Place the filler plates inside the chamber as desired.

**Sealing Time:** To increase or decrease the sealing time, press the **SET** button until **SEALING** is illuminated and then use the **UP/DOWN** buttons to adjust the sealing time to accommodate your application. It is recommended that you make adjustments in 0.1 second increments to avoid melting the pouch.

**Note:** for thicker pouches, you should increase the seal time in 0.1 increments until the pouch seals completely. For thinner pouches, decrease the seal time in 0.1 increments to avoid over sealing the pouch

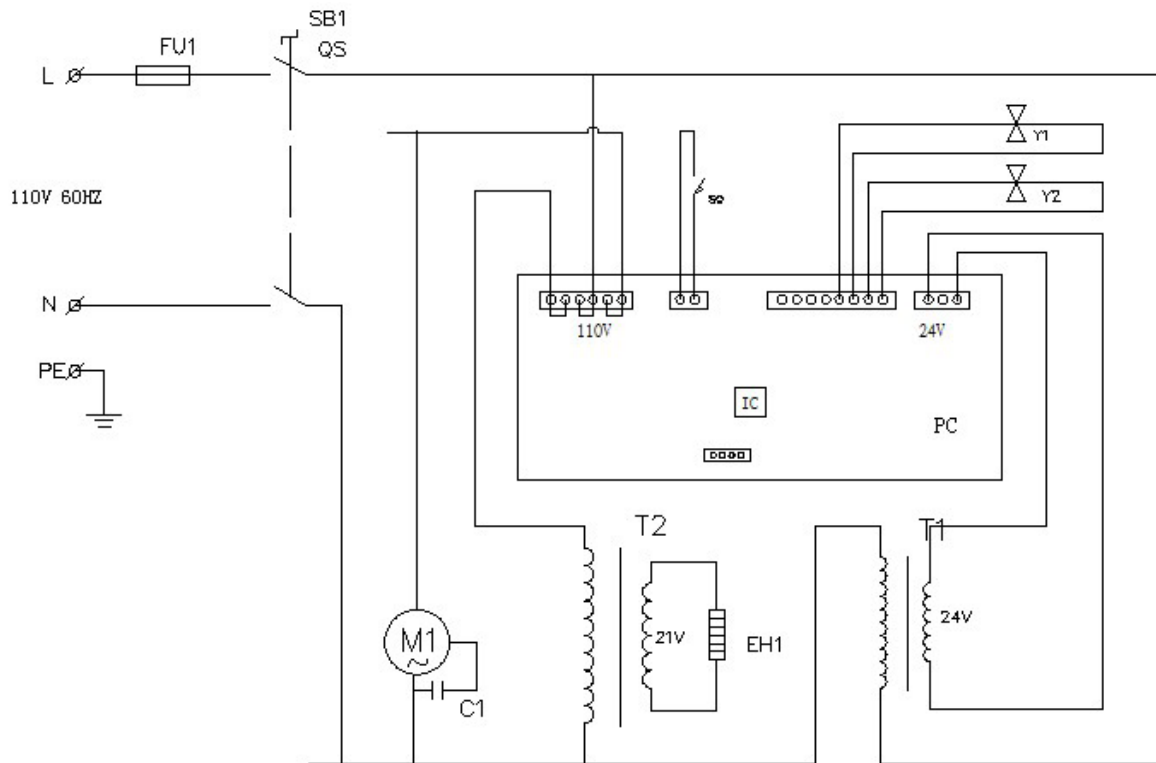
**Cooling Time:** To increase or decrease the cooling time, press the **SET** button until **COOLING** is illuminated and then use the **UP/DOWN** buttons to adjust the cooling time accordingly.

**NOTE:** to prolong the life of your seal bar, set the cooling time to twice the sealing time.



Problem	Possible Causes	Solution
Power light is on but the unit is not getting hot when you turn the thermostat up	It's either a defective thermostat or a burnt out heating element	Replace the broken part
Temperature keeps rising on it's own	The thermostat is malfunctioning	Replace the thermostat
Power is connected, heat is working but the indicator light is not on	The indicator light is defective	Replace the indicator light
Unit is plugged in but no indicator light or heat is working	The electrical connection is not connected well or the fuse is blown	Check the electrical connection to ensure it's connected properly. Replace the fuse if it's blown.

## Replacement Parts for the Vacuum Packing Machine









### **ACE Equipment One Year Limited Warranty**

*Admiral Craft Equipment Corp. (ACE) warrants its equipment against defects in materials and workmanship, subject to the following conditions:*

**ACE Equipment is warranted for one year, effective from the date of purchase by the original owner. A copy of the original receipt or other proof of purchase is required to obtain warranty coverage. This warranty applies to the original owner only, and is not assignable.**

Should any product fail to function in its intended manner under normal use within the limits defined in this warranty, at ACE's discretion, such product will be repaired, replaced with a refurbished unit, or replaced with a new unit by ACE, after defective unit has been inspected and defect has been confirmed. ACE does not assume any liability for extended delays in replacing any item beyond its control. This warranty does not apply to rubber and non-metallic synthetic parts that may need to be replaced due to normal usage, wear or lack of preventative maintenance.

This warranty covers products shipped into the 48 contiguous United States, Hawaii, and metropolitan areas of Alaska and Canada. Warranty coverage on products used outside the 48 contiguous United States, Hawaii and metropolitan areas of Alaska and Canada may vary. Contact ACE for details at 1-800-223-7750

The following conditions are not covered by warranty:

- Equipment failure relating to improper installation, improper utility connection or supply and problems due to improper ventilation.
- Equipment that has not properly been maintained, damage from improper cleaning, and water damage to controls.
- Equipment that has not been used in an appropriate manner, or has been subject to misuse, neglect, abuse, accident, alteration, negligence, damage during transit, delivery or installation, fire, flood, riot, or act of God.
- Equipment that has the model number or serial number removed or altered.
- Equipment on which the security seal has been broken.

If the equipment has been changed, altered, modified, or repaired without express written permission from ACE, then the manufacturer shall not be liable for any damages to any person or to any property, which may result from the use of this equipment thereafter.

This equipment is intended for commercial use only and this warranty is void if equipment is used in other than a commercial application.

For warranty and non-warranty related issues, technical support, purchase replacement parts and warranty registration visit [www.admiralcraft.com](http://www.admiralcraft.com). Please have your model number, serial number and proof of purchase ready. It is not necessary to contact the place where you originally purchased your product from.

**"THE FOREGOING WARRANTY IS IN LIEU OF ANY AND ALL WARRANTIES EXPRESSED OR IMPLIED INCLUDING ANY IMPLIED WARRANTY OF MERCHANTABILITY OR FITNESS FOR PARTICULAR PURPOSES AND CONSTITUTES THE ENTIRE LIABILITY OF ACE. IN NO EVENT DOES THE LIMITED WARRANTY EXTEND BEYOND THE TERMS STATED HEREIN."**

VER1212